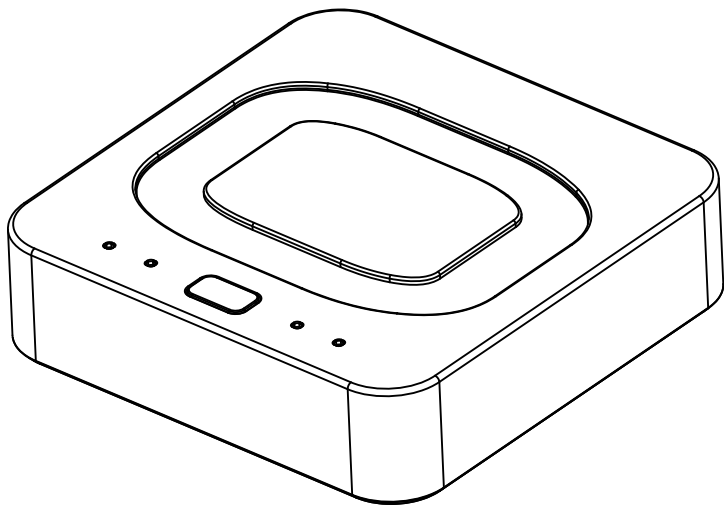


ORCOMM[®]

DILX-GW Operation Manual



Compliance And Standards:

The Digilux products use a IEEE 802.15.4 Zigbee mesh network to build and secure communications between all end points to allow wireless control.

The product complies with all the basic requirements and other relevant provisions of the 1999/5/EC directive using a TUV CE standard and process. For full details of this please contact support@orcomm.co.uk.

Operation is subject to the following two conditions: (1) This device may not cause harmful interference, and (2) this device must accept, and interference received, including that may cause undesired operation.

Installation of the product must be carried out by a qualified person conforming to all standards set out by law of installed country.

Areas covered:

- Installation
- Commissioning setup
- Troubleshooting
- Smart home setup



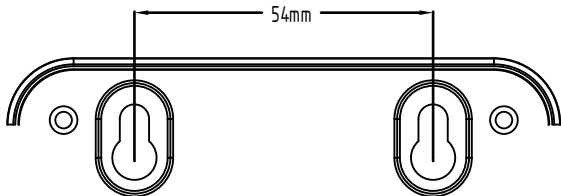
Installation:

The Digilux gateway has been designed to allow flexible installation using both fixed wall mounted or free standing mounting.

In both cases for best performance the unit must be installed in an area that is free from any metal fixtures or fixings, excessive wireless interference (DECT phones, microwaves etc). Where possible locate as central to the property as possible.

Fixed wall installation.

The rear of the product has built in "Keyhole" mounting points that can be used to attach to a fixed location.



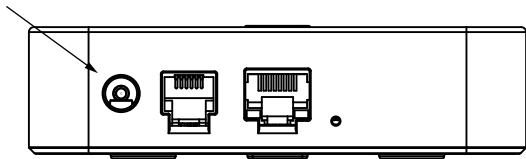
Please note the spacing between mounting points.

Maximum screw length protruding from the wall should be no more than 8mm.

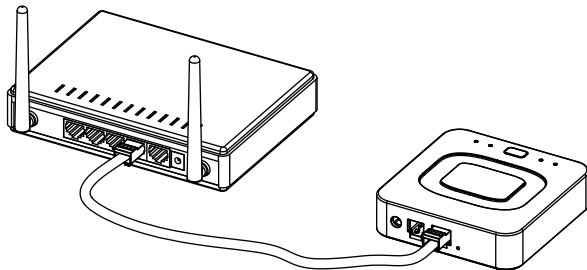
Ensure that adequate space has been left around the product for air flow and cable entry.

Connections.

Power: Using the provided 12V DC power supply connect into the rear of the gateway and insert into your nearest power outlet.



Internet (Optional): At this point it is optional to connect the gateway to the internet. Internet is only needed when smart functions such as mobile app/cloud control is needed. Using the provided network cable link between the LAN port on the gateway with the LAN port of your internet providers router.



Commissioning Setup - Pairing

The Digilux gateway allows for the Digilux range of products to be controlled from multiple locations. This could be 2-way switching, intermediate switching or multiway control.

Setting up which switch/modules are linked together is done via this gateway. You can set-up multiple groups of control.

For example,

Group 1 : Hallway switch linked to landing switch.

Group 2 : Bed sides switch linked to main wall switch.

Pairing switch plates to the gateway.

Getting the gateway ready for pairing devices is a simple process.

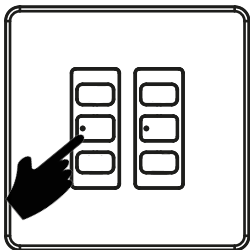
- 1) Ensure that the gateway is powered on following the instructions above.
- 2) Press and hold the button on the front of the gateway until the 2nd LED blinks once. You will now see the 2nd and 4th LED's blinking.



The gateway is now waiting for the pairing process to start. The gateway will stay in the pairing mode if idle for 5 minutes waiting for the first request.

Ensure that the switch plates are installed and powered as directed in the user manuals.

- 3) Starting with the closest switch plate to the gateway press and hold the middle button on the 1st gang for 6 seconds.



- 4) The LED will start to blink. Now press the button 3 times within 5 seconds.
- 5) The LED will blink 2 times.
- 6) Once switch plate pairs the LED will blink rapidly confirming pairing. (If you do not get the rapid blinking repeat step 3 onwards)

At the same time the 4th LED on the gateway will also blink rapidly to confirm successful pairing.



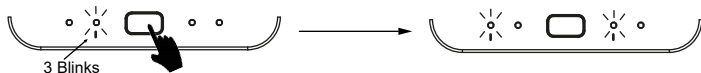
Working your way from the nearest to the farthest away repeat this process for all Digilux units that you have within the apartment. Please make sure that all units are paired with successful confirmation blinking from both the gateway and the switch plate. You only need to pair one gang per switch plate.

Once finished pairing all devices press the button on the gateway to complete process.

Commissioning Setup - Creating multiway links

Make sure that all devices have been paired to the gateway before continuing.

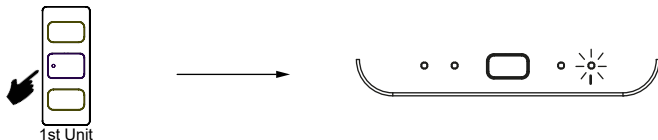
- 1) Ensure that the gateway is powered.
- 2) Press and hold the button on the front of the gateway until the 2nd LED blinks 3 times. You will now see the 1st and 3rd LED's blinking.



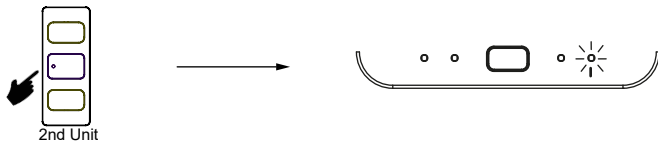
- 3) Press button once for the 1st group setup. The 2nd LED will blink once to confirm group 1 is being configured.



- 4) Go to the first switch plate that you want in the group. Press the centre button on the gang. The 4th LED on gateway will blink rapidly to confirm joining.



- 5) Go to the next switch plate that you want to add to the group and press the centre button on the gang. The 4th LED on gateway will blink rapidly to confirm joining.



6) Repeat the process until you have added all the switch plates to the group.

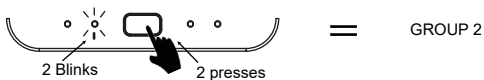
7) Press the button on the gateway to save the setting for that group. You will see LED 2 blink rapidly.

If you want to add further groups press the button on the gateway for the number of times for the group number you want.

E.g. Press button 2 times for group 2
Press button 3 times for group 3

The 2nd LED will blink to denote what group numbers you are setting up.

E.g. 2 blinks = Group 2
3 blinks = Group 3



8) Repeat from step 4.

9) Once all groups have been created press and hold the gateway button for 5 seconds.



Troubleshooting

No LEDs are illuminated on the gateway.

Power cycle the gateway.

Check that the supplied power supply is being used and is connected to both the rear of the gateway and power outlet.

Reset the gateway.

Digilux switch plates not pairing with the gateway.

Ensure that the gateway is in pairing mode and indicators flashing.

Power cycle the gateway and re-enter pairing mode

Make sure that you start with the closest switch plate to the gateway and work outwards.

Multiway control not working.

Power cycle the gateway.

Confirm that circuit/gangs have been added to a group.

Create new group and add gangs to the new group.

Resetting gateway.

(CAUTION - Please note that all settings, pairings and groupings will be erased)

Only use this as a last-minute option or when asked to do so by a member of the Orcomm support team.

- 1) With the power removed press and hold the button.
- 2) Reapply power and continue to hold button until all LED's start to flash.
- 3) Release the button

The gateway has now been factory restored.



Smart Lighting Controls

The Digilux gateway gives you the option to control your lighting from your smart device (Apple and Android) as well as Amazon Alexa and Google Home voice services.

To set this up please download the app by scanning the below or searching for "Orcomm Connect" on your smart devices app store.



Once you have downloaded the App follow the onscreen wizards to get you setup and connected.