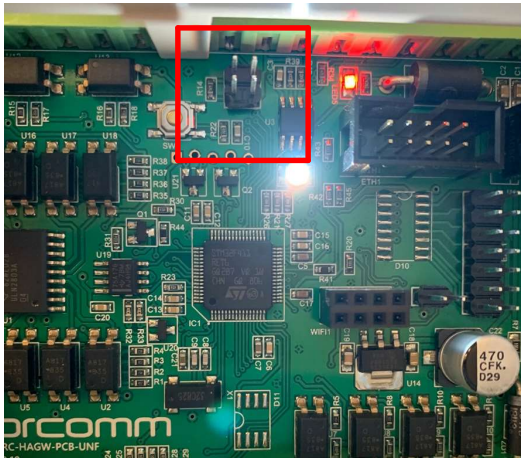
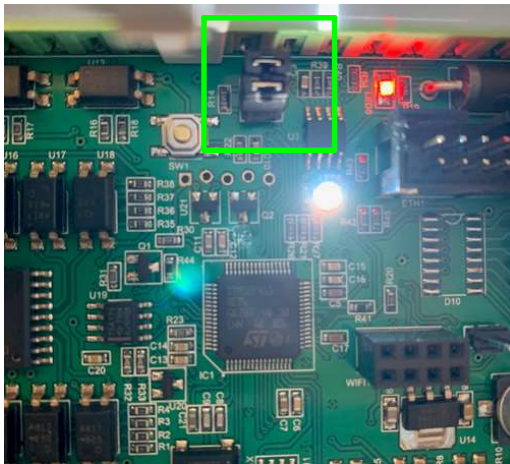


# Internal 120 ohm Bus Resistor

120 ohm bus resistor NOT active



120 ohm bus resistor active

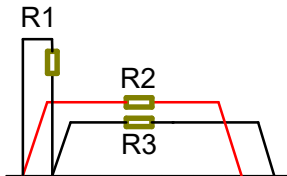


# BIAS Resistors

NOTE:  
 This drawing is designed to show  
 how to install BIAS resistors.  
 This is NOT a final drawing

Typical resistor values  
 R1 = 120 ohm (A and B)  
 R2 = 1K (A and 12+)  
 R3 = 1K (B and GND)

INTERNAL Bus resistor must  
 NOT be active if installing BIAS



NC8	NC5	A (IN)
C8	C5	B (IN)
NO8	NO5	A(OUT)
NC7	N/A	B(OUT)
C7	D1	ORC(A)
NO7	GND	ORC(B)
NC6	D2	SH
C6	GND	12V
NO6	GND	GND
ORC-HAGW		
NO1	3.3V	
C1	PWM1	
NC1	GND	
NO2	PWM2	
C2	GND	
NC2	PWM3	
NO3	GND	
C3	GND	
NC2	PWM4	
NO4	GND	
C4		
NC4		
N/A		
A1		
GND		
A2		
GND		

	NAME	DATE	<b>ORCOMM</b>		
DRAWN	tonyh	15/02/21			
CHECKED			TITLE BIAS resistors for RS485 Bus		
ENG APPR			SIZE A3	DWG NO DWG 10RC-HAGW V2 BIAS	REV 1
MGR APPR			SCALE: N/A		SHEET 2 OF 1