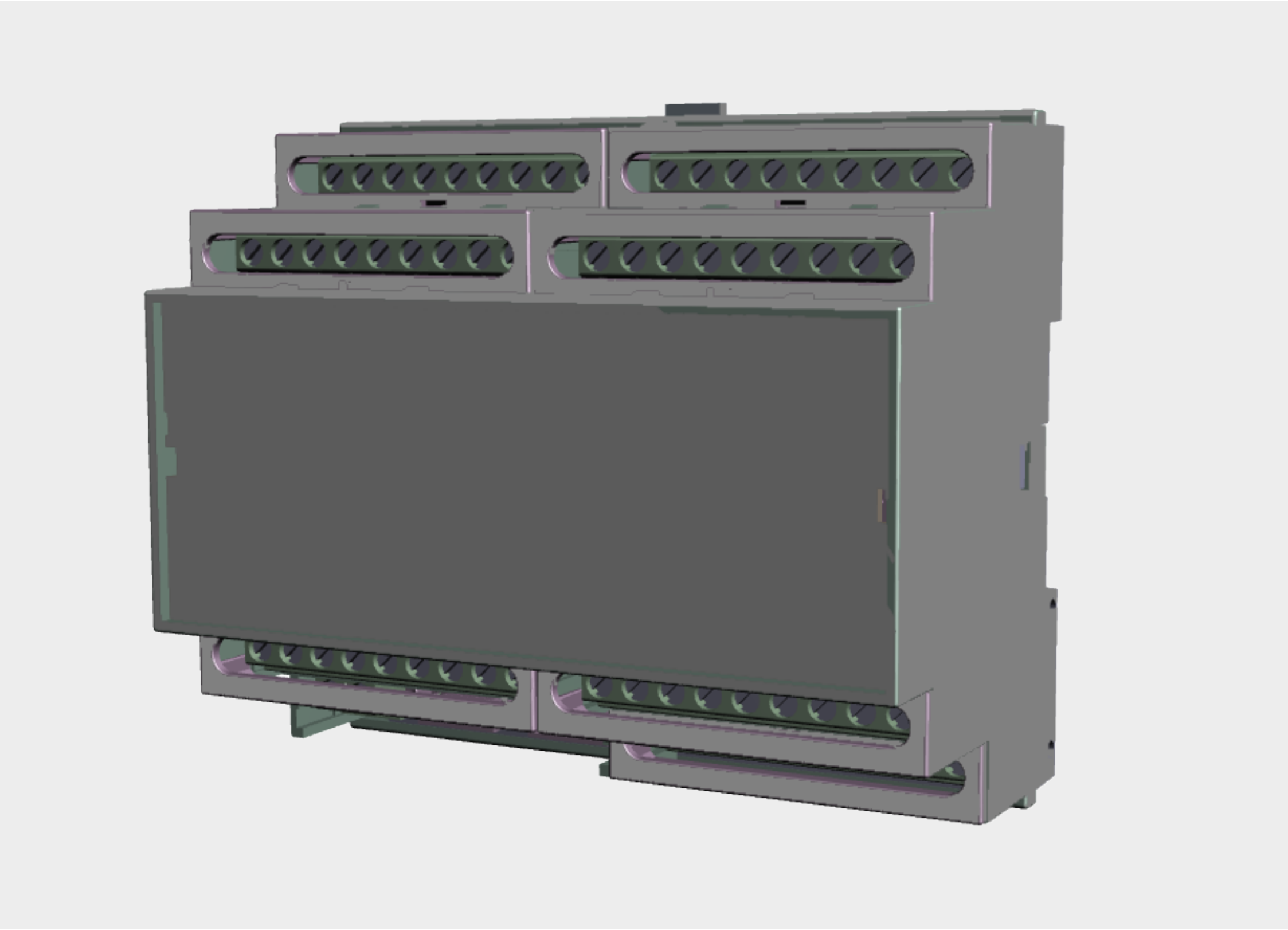


# ORC-HAGW-EXT

Extension Module for Smart Home



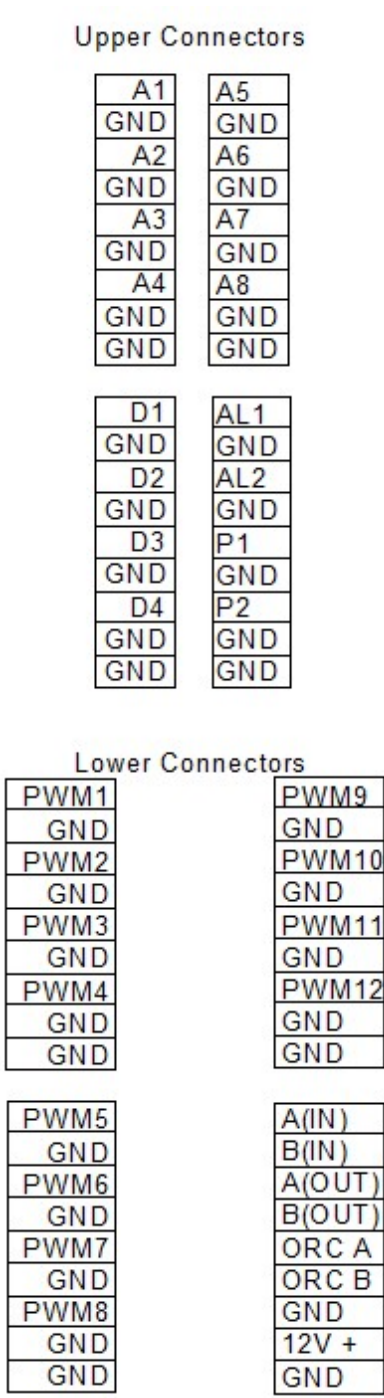
## DETAILS

Enclosure type	6-DIN
Dimensions	106 x 90 x 58 mm
Termination	9 Terminal (ELV)
System Type	Orcomm Smart Home
Protocol	Modbus / RS485 / ORC-NET

## DESCRIPTION

ORC-HAGW-EXT modules are designed to allow the Smart Home offering from orcomm to be expanded for various input and outputs. There are several models available.

## LINE DRAWING



## TECHNICAL INFORMATION

Input Power	12V DC / 500mA (+/-10%)
PWM or Digital (output)	Up to 12
Analogue (Input)	Up to 8
Digital (Input)	Up to 8
Communication	RS485
Primary Contorller	No
Versions	
ORC-HAGW-EXT-A	Alarm (8x Zones and 1x PWM output)
ORC-HAGW-EXT-C	Controller (Mutlipurpose)
ORC-HAGW-EXT-F	FCU (4 cooling/heating or 6 cooling only)

## NOTES

Extension module ORC-HAGW-EXT-C requires Screen / ORC-HAGW to act as translator for data transmission. Multipurpose version also may require programming each Input to desired installation design.