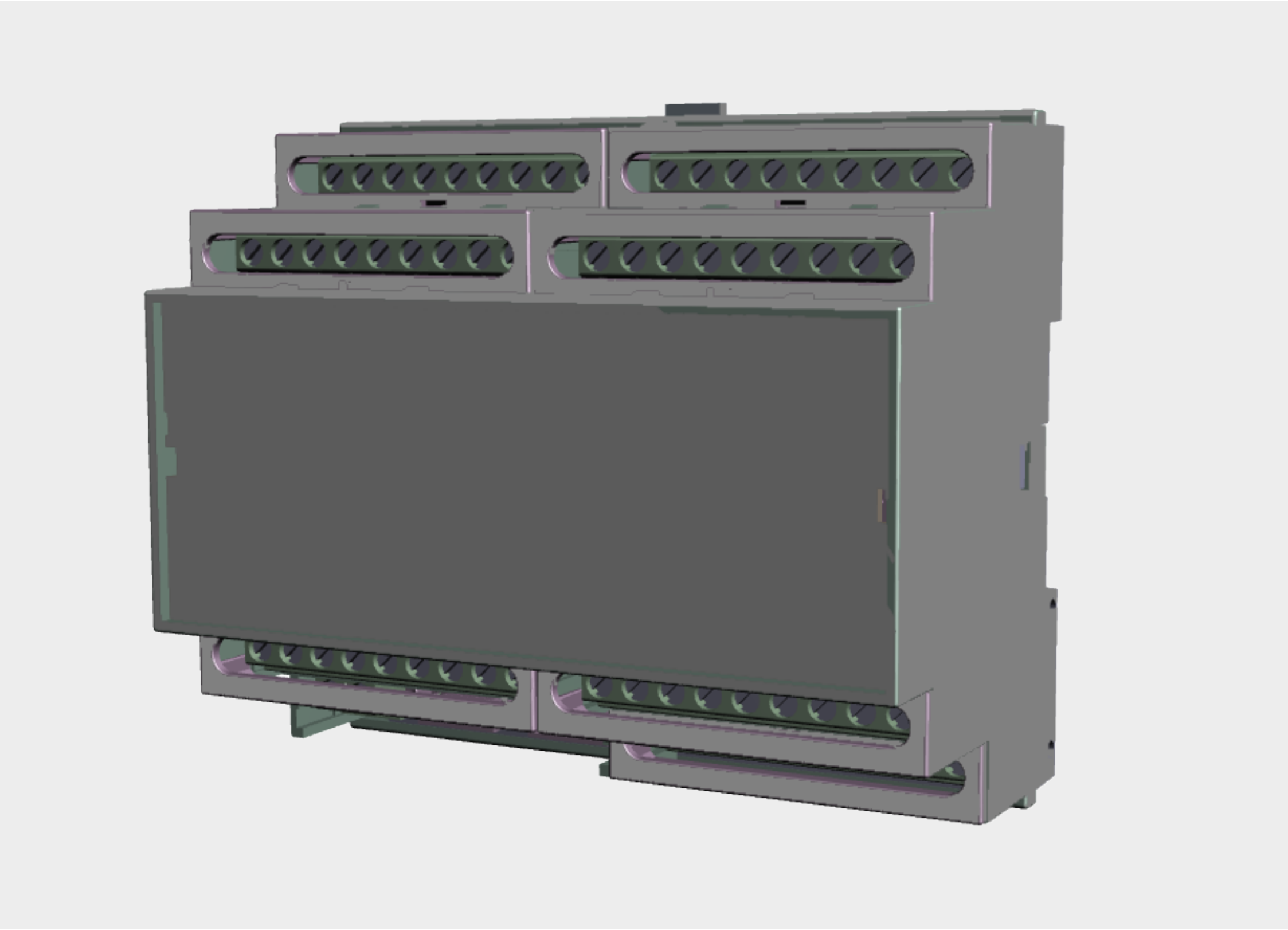


ORC-HAGW-EXT-B

Extension Module for Smart Home



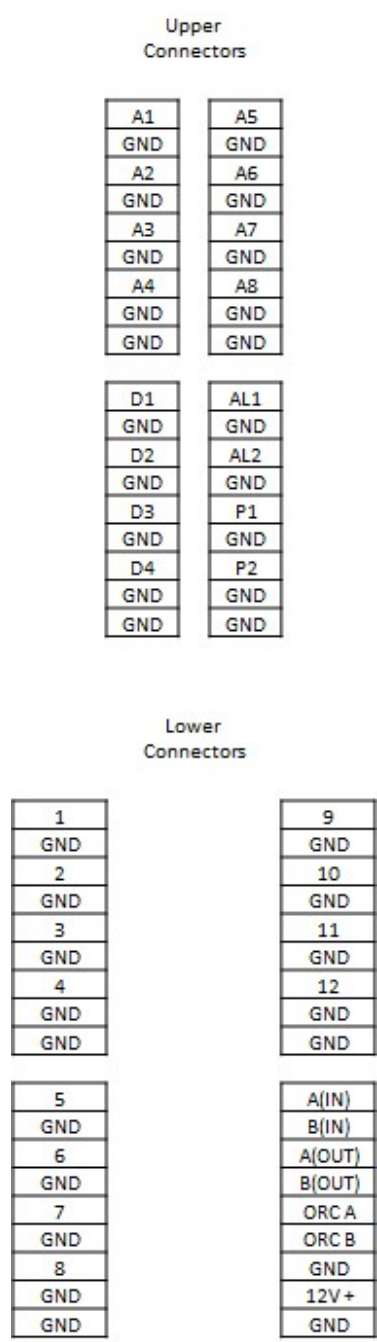
DETAILS

Enclosure type	6-DIN
Dimensions	106 x 90 x 58 mm
Termination	9 Terminal (ELV)
System Type	Orcomm Smart Home
Protocol	Modbus / RS485 / ORC-NET

DESCRIPTION

ORC-HAGW-EXT modules are designed to allow the Smart Home offering from orcomm to be expanded for various input and outputs. There are several models available.

LINE DRAWING



TECHNICAL INFORMATION

Input Power	12V DC / 500mA (+/-10%)
PWM (output)	Up to 8
Digital (output)	Up to 12
Analogue (Input)	Up to 8
Digital (Input)	Up to 8
Communication	RS485
Primary Controller	No

NOTES

Extension module ORC-HAGW-EXT-B requires Screen / ORC-HAGW to act as translator for data transmission. Multipurpose version also may require programming each Input to desired installation design.